

**Sefram**  
Sefram

**ERIMEC**  
MESSBAR MACHEN, WAS MESSBAR IST

# SEFRAM

## DAS 801 / DAS 801SV

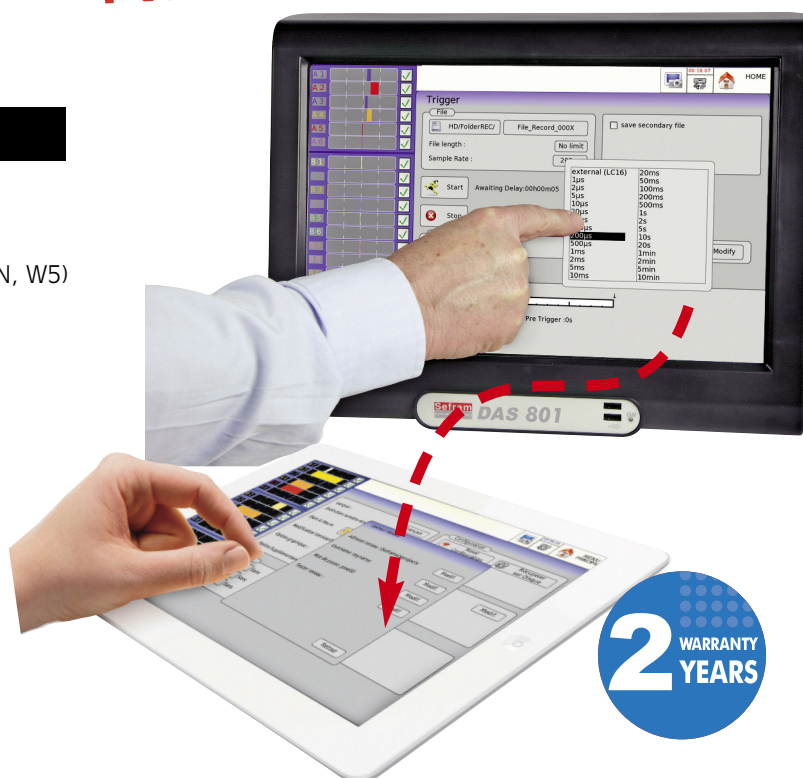
### 12 channels value-for-money Paperless recorders

**NEW**

#### Capabilities

- 12 multiplexed analogue channels:
  - Voltage up to 50V
  - Temperature with Pt100 (2, 3, 4 wires)
  - Temperature with thermocouples (J, K, T, S, E, N, W5)
- Resolution: 16 bit
- Sampling rate: 5kHz max.
- 16 logical channels
- 15.4 inches panoramic TFT touch screen
- 500Gb hard disk
- Interface: Ethernet, 6 x USB, VGA
- Power analysis (50Hz, 60Hz, 400Hz, 1kHz)
- Internal battery option
- WiFi option

**DAS 801SV** : no cooling fan version,  
for special polluted environmental conditions.



#### 12 multiplexed analogue channels

The new DAS801 is configured with 12 multiplexed analogue channels and 16 logical channels. The input board is suitable for all applications: DC and AC low voltage (up to 50V), temperature (Pt100, thermocouples), sensors,...

#### A panoramic touch screen to ease the operation

With its 15.4 inches touch screen, using the DAS801 is like a game: the man-machine interface has been designed to be intuitive, all menus are clear and simple and the user's manual can be displayed on the recorder if needed.

#### Various analysis functions and fast acquisition on disk

The new DAS801 will provide many automatic measurements, various triggers and math functions. All is done to simplify the analysis of complex signals. Take benefit of the 12 channels combined with hard disk memory for your diagnostics.

#### A connected instrument

With its 6 USB interfaces, the LAN interface or through WiFi communication, you can remote control your recorder or download your records. With Virtual Network Computing software (not included), view and control your DAS801 from your computer or your tablet.... Just like if you have the recorder in front of you!



**Sefram**

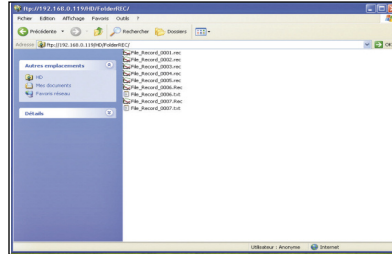
## ► A modular concept for all your applications

Communication  
and simplified data  
export :



With Virtual Network Computing software, you remote control your DAS801 from a computer or a tablet.

FTP : easy transfer  
of records



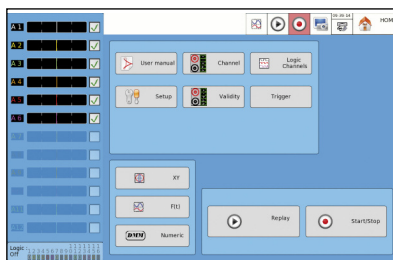
FTP or TCP-IP transfer of files  
and recorded data display.

WiFi

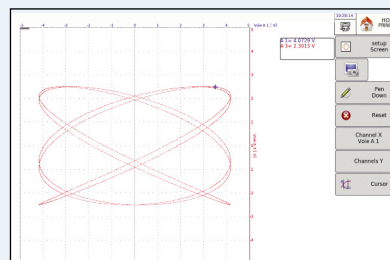


With the WiFi interface (option) you can take the best benefit of remote control of your recorder. All functions, all modes can be remote controlled.

Several operating  
modes



**Expert mode** : user will access  
to all parameters of the setup.  
**User mode** : restricted access.



**XY mode with pen-up  
and pen-down.**

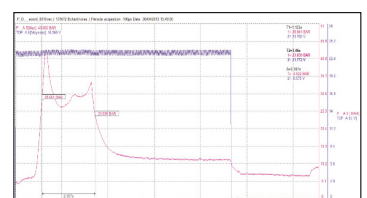
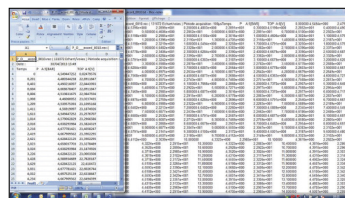
With an efficient XY mode,  
your DAS 801 will replace your  
old analogue XY tables.

## ► Sefram Viewer

This licence free software is supplied with each recorder. It allows the visualization of the recordings and the data transfer to other applications. SEFRAM Viewer makes the acquired signal analysis easier.

### Capabilities

- Curve printing
- Display of values (text)
- Cursors and zoom
- File concatenation
- 8 math calculations
- Up to 120 characters text notes
- Bitmap, Excel®, txt, csv export
- Easy setup of curves display



## ► Internal battery option (not available for DAS 801SV)

This factory option allows you to protect your important campaign against main power break and allows measurement campaigns where the main power is not available.

### Capabilities

- Autonomy with internal battery: 2hours minimum
- Charging time: < 3 hours (instrument off)
- Charging time: < 6 heures (instrument on)
- Battery status indicated on the menu bar of the instrument



# DAS 801 / DAS 801SV

Paperless recorders

## GENERAL SPECIFICATIONS

### DISPLAY

15,4 inches TFT touch screen, with backlight  
Resolution 1280 x 800 dots  
f(t) and XY display capability  
Functions: zoom, cursors, zoom between cursors  
Math and scaling functions ( $Y = aX + B$ )  
20 automatic measurements available

### MEMORY

Memorization of setup  
Memory 128 Mwords, in segments  
Internal hard disk 500Gb

### INTERFACES AND I/O

Interfaces 6 x USB (2 on the front panel,  
4 on the rear panel), VGA, Ethernet  
Logical channels 16 logical channels  
(V max: 24V,  $Z_{in} = 4,7\text{kohms}$ )  
Sensor supply 12V / 0,2A max (non floating)  
Alarm output 3 output, with 1 relay (24V/100mA)  
and 2 x TTL 5V

### GENERAL AND ENVIRONMENT

Power supply 95VAC to 264VAC, 47Hz to 63Hz  
Consumption 47 VA max  
Operating temperature  $0^{\circ}\text{C}$  to  $+40^{\circ}\text{C}$   
Storage temperature  $-20^{\circ}\text{C}$  to  $+60^{\circ}\text{C}$   
Maximum operating RH 80% max.  
Dimensions 298 x 394 218 mm  
Weight 8kg

### SPECIFICATIONS - MULTIPLEXED BOARD

Channels : 12 per board

### VOLTAGE

DC voltage ranges: 1mV to 50 V  
Max offset:  $\pm 5$  ranges  
Accuracy:  $\pm 0,1\% \pm 10\mu\text{V} \pm 0,1\%$  offset  
TRMS AC+DC : 200mV to 50V  
Bandwidth (-3dB): 5Hz to 100Hz  
Crest factor : 2,2

### TEMPERATURE

Sensor	Using environnement	Ranges
PT100 (2,3,4 wires)	$-200^{\circ}\text{C}$ to $850^{\circ}\text{C}$	$20^{\circ}\text{C}$ to $1000^{\circ}\text{C}$
J	$-20^{\circ}\text{C}$ to $1200^{\circ}\text{C}$	$20^{\circ}\text{C}$ to $2000^{\circ}\text{C}$
K	$-250^{\circ}\text{C}$ to $1370^{\circ}\text{C}$	$20^{\circ}\text{C}$ to $2000^{\circ}\text{C}$
T	$-200^{\circ}\text{C}$ à $400^{\circ}\text{C}$	$20^{\circ}\text{C}$ to $500^{\circ}\text{C}$
S	$-50^{\circ}\text{C}$ to $1760^{\circ}\text{C}$	$50^{\circ}\text{C}$ to $2000^{\circ}\text{C}$
B	$-200^{\circ}\text{C}$ to $1820^{\circ}\text{C}$	$50^{\circ}\text{C}$ to $2000^{\circ}\text{C}$
E	$-250^{\circ}\text{C}$ to $1000^{\circ}\text{C}$	$20^{\circ}\text{C}$ to $1000^{\circ}\text{C}$
N	$-250^{\circ}\text{C}$ to $1300^{\circ}\text{C}$	$20^{\circ}\text{C}$ to $1000^{\circ}\text{C}$
W5	0 to $2320^{\circ}\text{C}$	$50^{\circ}\text{C}$ to $2000^{\circ}\text{C}$
Accuracy	Cold junction compensation: $\pm 1,25^{\circ}\text{C}$	

### SAMPLING

Resolution 16 Bits  
Sampling rate 200 $\mu\text{s}$  maxi. (5K sample/s)  
Memory length 32M word in segments of up to 128 Blocks  
Triggering Positive edge, negative edge, on logical input,  
delay  
Pre trigger  $-100\%$  à  $+100\%$

### BANDWIDTH

Analog input bandwidth (-3dB) 1kHz at -3dB  
Programmable digital filters 0,1Hz to 50Hz  
Input impedance (DC) 2 M $\Omega$  ranges  $>5\text{V}$   
Input capacitance 10M $\Omega$  (150pF) for other ranges  
Maximum input voltage between one channel  
and the frame ground  $\pm 50\text{V}$   
between 2 terminals of one channel  $\pm 50\text{V}$   
all input are differential, non isolated  
Common mode voltage (max.)  $\pm 5\text{V}$  for ranges  $< 5\text{V}$   
 $\pm 50\text{V}$  for ranges  $> 5\text{V}$

### ACCESSORIES AND OPTIONS (\* = FACTORY OPTION)

984405500 16 isolated logical channels module  
910007000 Logical channels cords  
916001000 Internal battery option\*  
916004500 Wifi communication option  
916007000 Rack mounting kit

### SHUNTS

910007100 Shunt 0,01 ohm 3A max  
910007200 Shunt 0,1 ohm 1A max  
989006000 Shunt 1 ohm 0,5A max  
912008000 Shunt 10 ohms 0,15A max  
989007000 Shunt 50 ohms 0,05A max  
207030301 Shunt 0,01 ohm 30A max  
207030500 Shunt 0,001 ohm 50A max

### CARRYING CASES (TROLLEY)

914007500 For DAS801/801SV

### FLEXPRO ANALYSIS SOFTWARE

100081 Flexpro View (basic version)  
100082 Flexpro Full

Note : battery option is not available for DAS 801SV

FTDAS801SV A 01 - Specifications can be updated without notice



32, rue Edouard Martel • B.P. 55 • 42009 - St Etienne cedex 2  
Tel. +33 (0).4.77.59 36 81  
Fax. +33 (0).4.77.57.23.23  
Website : [www.sefram.fr](http://www.sefram.fr) • e-mail : [sales@sefram.fr](mailto:sales@sefram.fr)



For assistance and ordering



Tel.: 02241 2551880, [info@erimec.de](mailto:info@erimec.de)